

'A' SIDE PANEL

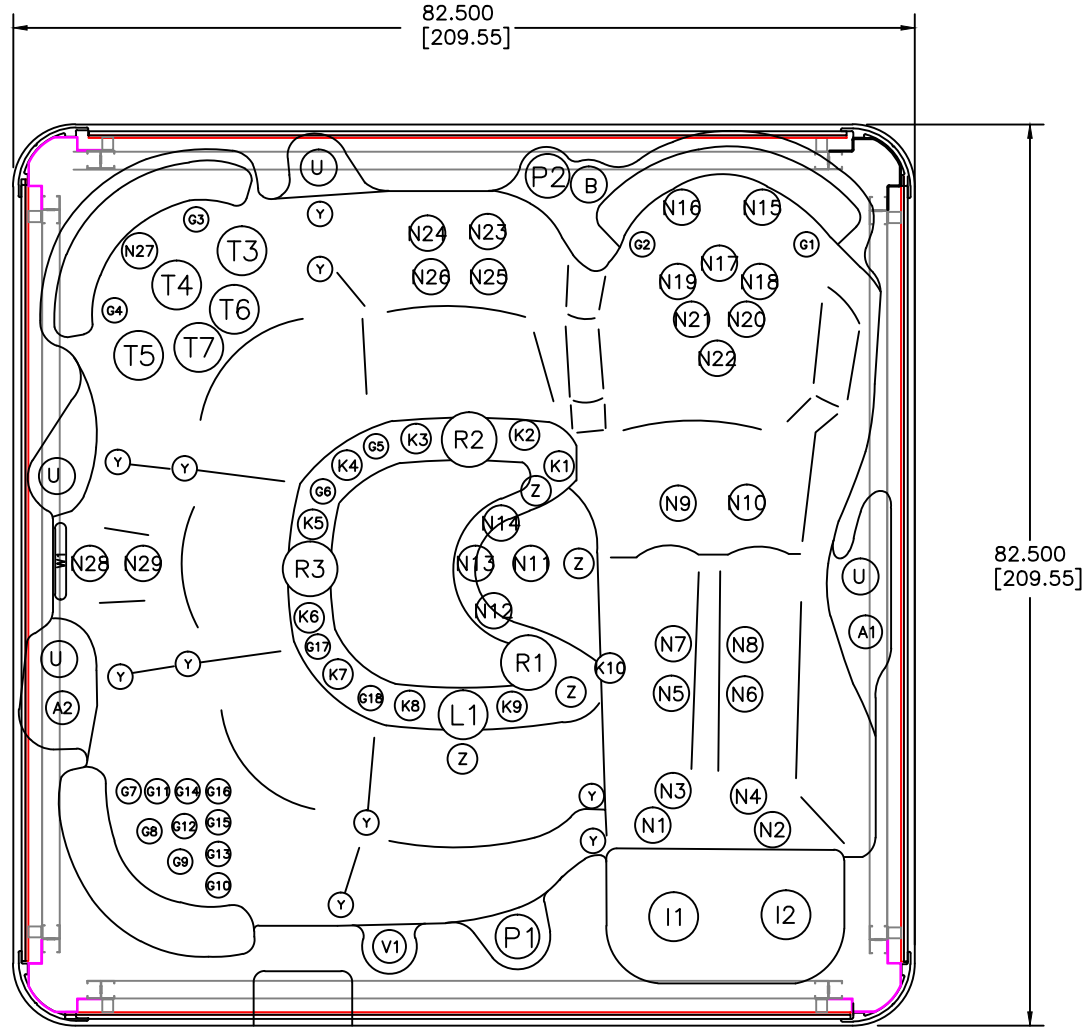
EURO EQUIPMENT SPECIFICATION

- NOTES:
- 1) PUMP #1
PN 109227
 - 2) PUMP #2
PN 109227
 - 3) CONTROL PACK
MODEL MXBP21, 800INC, 50HZ/HTR
PN 109321
 - 4) PUMP #3 CIRC PUMP
PN 110446
 - 5) BLOWER
PN 110531
 - 6) OZONATOR
PN 110329
 - 7) U.V. SANITIZER
PN 110249
 - 8) SUBWOOFER, POWER SUPPLY, 110W
PN 110341, PN 103728
 - 9) WIFI MODULE
PN 109241.

Vita Monarque

Rød skrift = Ekstra utstyr

REVISIONS		DESCRIPTION	BY	TITLE: MODEL MON EQUIPMENT SPECS. & LAYOUT	DRAWING NO.: MMON8105	DATE: 12/12/11
#	DATE					
F	6/22/18	CHANGED BLOWER	SA		CYCLE TIME: 000 sec	SHEET: 1 OF 1



REVISIONS #	DATE	DESCRIPTION	BY

MAAX SPAS
25605 S. ARIZONA AVE.
CHANDLER, AZ. 85248
www.maaxspas.com

TITLE
MODEL MONARQUE (MON)
TOP VIEW GA

THIS IS THE SOLE PROPERTY OF MAAX SPAS
AND MAY NOT BE REPRODUCED PHOTOGRAPHED
OR REMOVED IN ANY WAY WITHOUT THE EXPRESS
WRITTEN CONSENT OF MAAX SPAS.

TOLERANCE ±0.0625

SCALE 1:20

PROJECT NO.

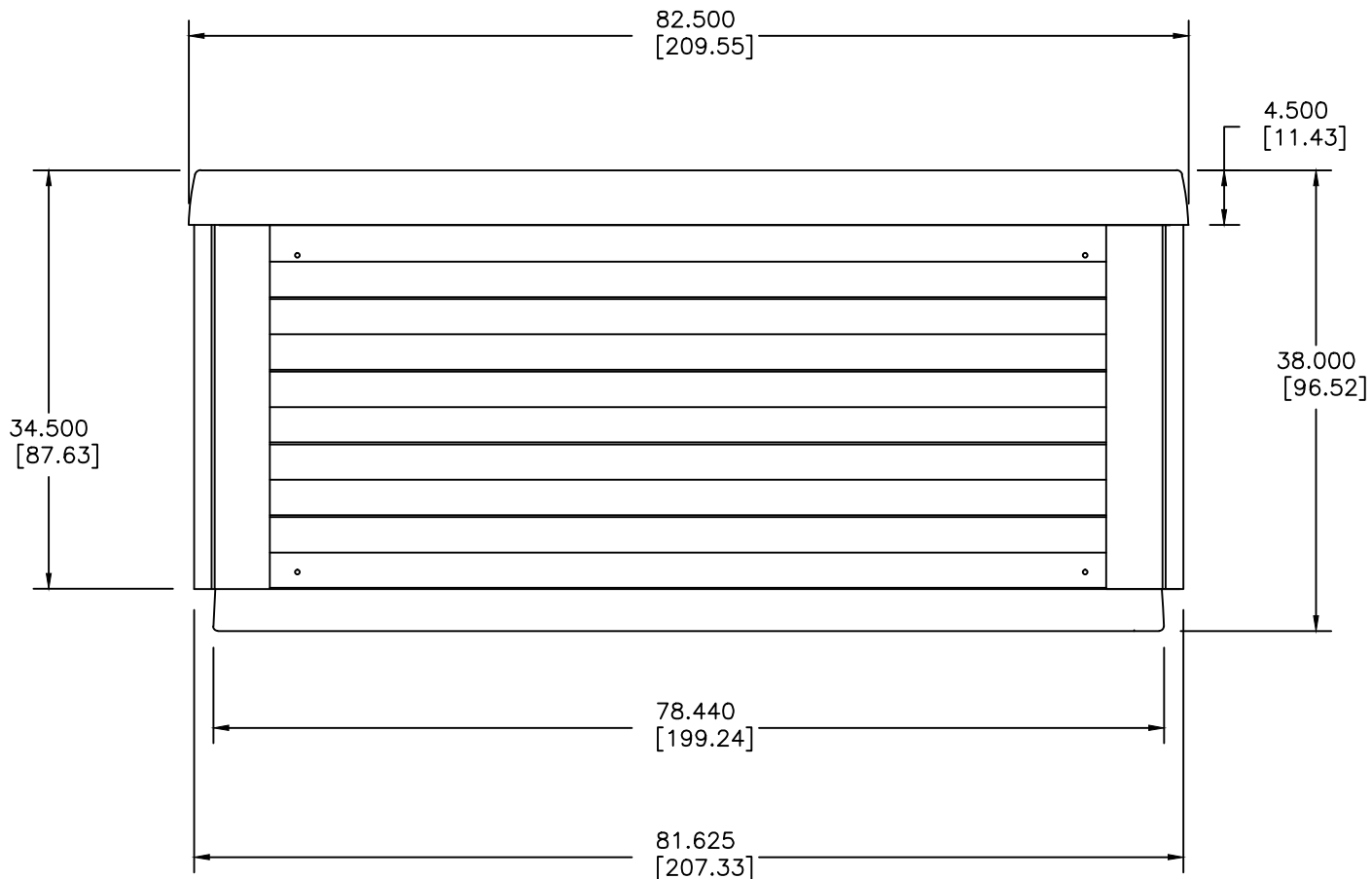
DRAWING NO. NMON8001

DRAWN BY JDD

DATE 11/1/2011

UNITS INCHES

PART NO. MON8001 SHEET 1 OF 1



REVISIONS #	DATE	DESCRIPTION	BY

MAAX
SPAS
25605 S. ARIZONA AVE.
CHANDLER, AZ. 85248
www.maaxspas.com

TITLE
MODEL MONARQUE (MON)
SIDE VIEW GA

THIS IS THE SOLE PROPERTY OF MAAX SPAS
AND MAY NOT BE REPRODUCED PHOTOGRAPHED
OR REMOVED IN ANY WAY WITHOUT THE EXPRESS
WRITTEN CONSENT OF MAAX SPAS.

TOLERANCE ±0.0625

SCALE 1:20

PROJECT NO.

DRAWING NO. MMON8001

DRAWN BY JDD

DATE 11/1/2011

UNITS INCHES

PART OF MON\MIY MON8001.dwg SHEET 1 OF 1